

1 2 3 4 5 6 7 8

A

B

C

D

E

F

A

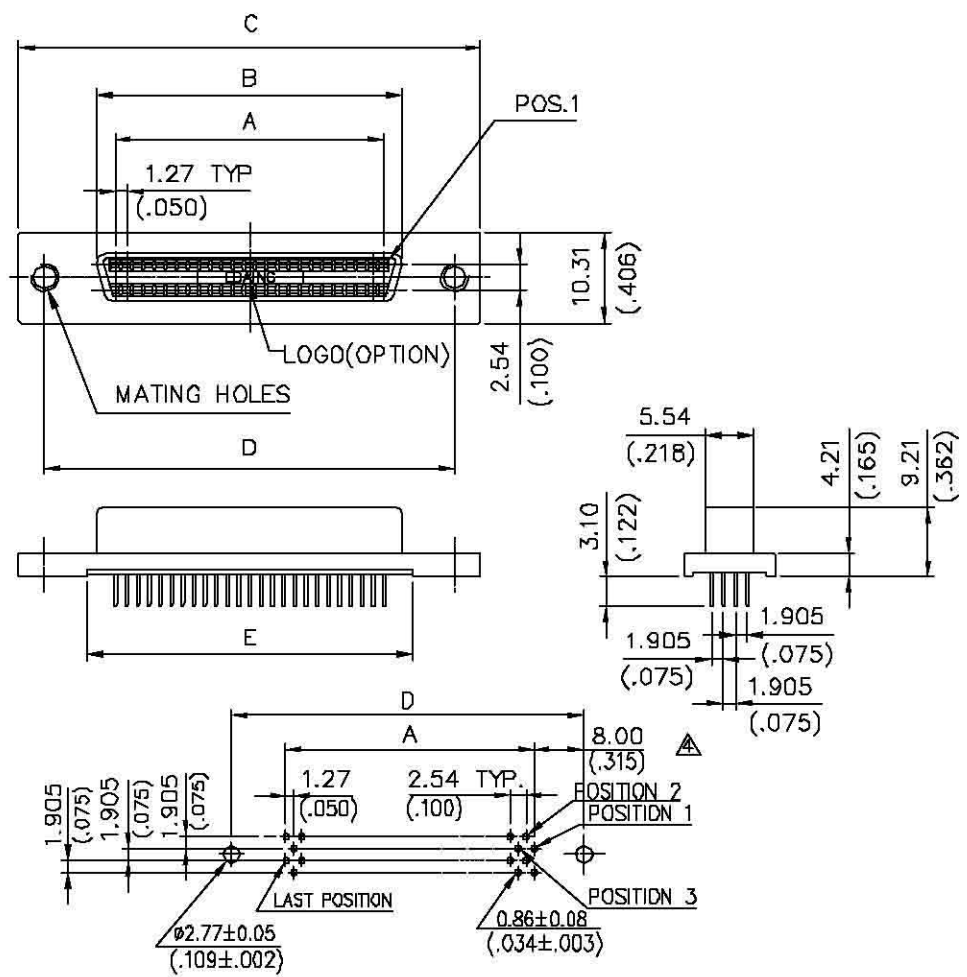
B

C

D

E

F



RECOMMENDED P.C.B. HOLE PATTERN  
(FOR METAL SHELL TYPE 68 POSITION)

SPECIFICATION -

- INSULATOR MATERIAL : PBT WITH GLASS-FIBER REINFORCED UL 94V-0
- CONTACT MATERIAL : PHOSPHOR BRONZE , GOLD OVER NICKEL
- BRACKET: ZINC-ALLOY , NICKEL PLATED.
- RATED CURRENT : 1A
- INSULATION RESISTANCE : 500M $\Omega$  MIN.
- CONTACT RESISTANCE : 35m $\Omega$  MAX.
- DIELECTRIC WITHSTANDING VOLTAGE : AC 250V FOR 1 MINUTE.
- OPERATING TEMPERATURE : -25°C - +85°C.

ORDERING INFORMATION

BAT 068 S - 3 0 5 2 3 - 10  
(1) (2) (3) (4) (5) (6) (7) (8) (9)

- SERIES NUMBER :  
8AL : HIGH DENSITY 1.27(.050") SPACING  
MINI CONNECTOR STRAIGHT P.C.B. TYPE
- NO OF CONTACTS :  
EX 068 : 68 POSITIONS
- CONTACT TYPE :  
S : SOCKET
- COLOR (INSULATOR)  
3 : BLACK
- CONTACT FINISH :  
0 : SELECTED GOLD FLASH OVER 30 $\mu$  NICKEL  
2 : 15 $\mu$  SELECTED GOLD OVER 50 $\mu$  NICKEL  
3 : 30 $\mu$  SELECTED GOLD OVER 50 $\mu$  NICKEL
- METAL SHELL FINISH :  
4 : TIN PLATED SHELL, WITHOUT GROUNDING INDENTS  
5 : NICKEL PLATED SHELL, WITHOUT GROUNDING INDENTS
- MATING HOLES :  
2 : 2#- 56 UNC  
3 : M2.6 \* 0.45  
4 : 4#- 40 UNC  
5 :  $\phi$ 3.10 THROUGH HOLE  
6 :  $\phi$ 3.96 THROUGH HOLE
- BRACKET TYPE :  
3 : WITHOUT RAILS & LATCH BLOCKS

	49.63 (1.953)	57.91 (2.280)	63.88 (2.515)	46.13 (1.816)	41.91 (1.650)	68	8AT068S
	E	D $\pm$ 0.13 (.005)	C	B $\pm$ 0.25 (.010)	A $\pm$ 0.13 (.005)	NO. OF POSITION	PART NO.
MATERIAL	TOLERANCE UNSPECIFIED .000 $\pm$ 0.13(.005) .00 $\pm$ 0.25(.010) .0 $\pm$ 0.38(.015) $\pm$ ANGLE $\pm$ 1°			GC ELECTRONIC CO.,LTD.			
FINISH	DRAWN			NAME		SCALE	UNIT
	DESIGNER			BAT SERIES 1.27(.050)		1.4:1	MM(INCH)
	CHECKED			SCSI-III H.D. STRAIGHT P.C.B.			SHEET
	APPROVED			TYPE FEMALE CONNECTOR			1/1
				DRAWING NO.			REV.
				R-S18AT-2			5
				A3		RS18AT21	

1 2 3 4 5 6 7 8 A3 RS18AT21